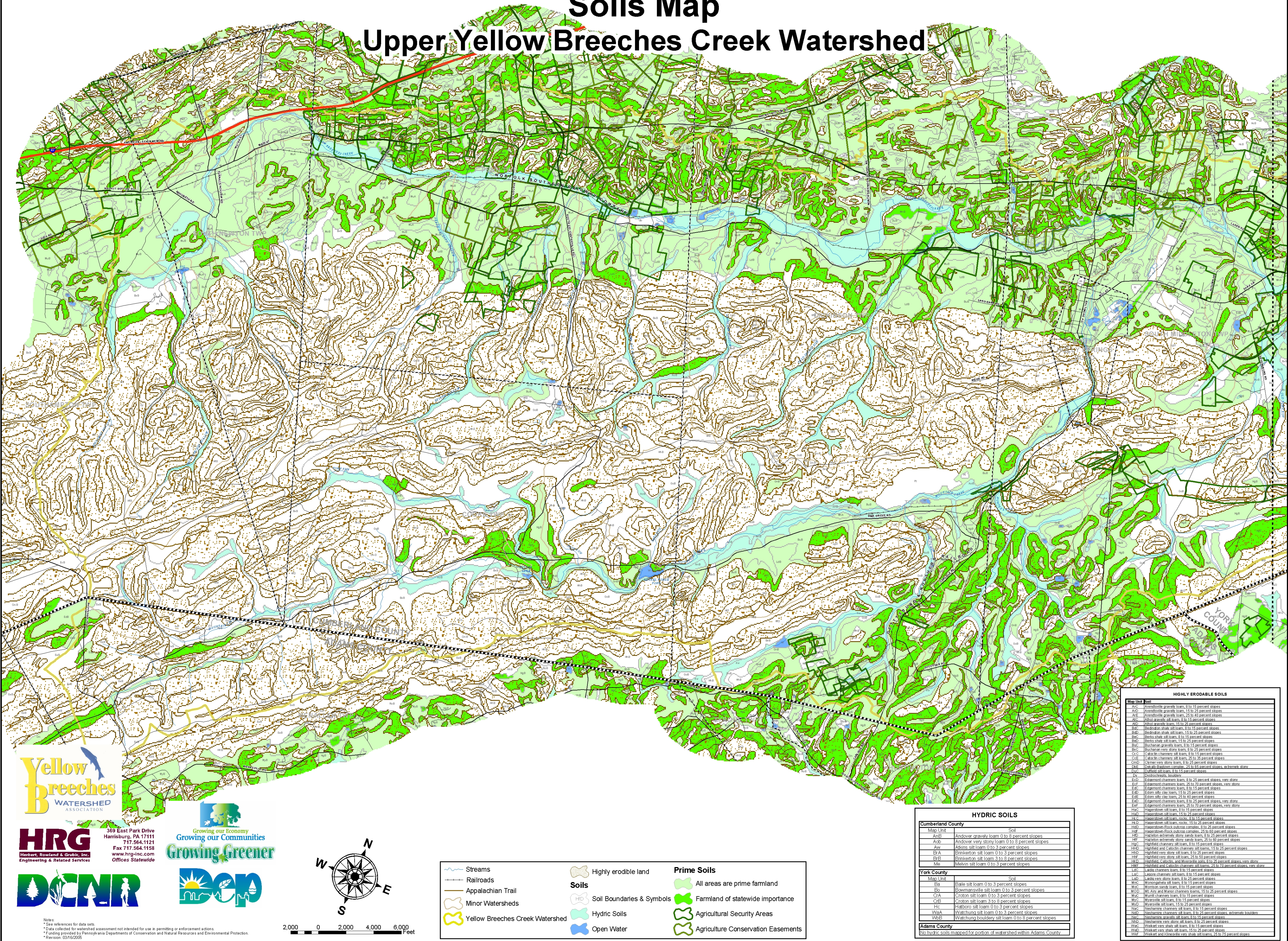


Soils Map

Upper Yellow Breeches Creek Watershed



HIGHLY ERODABLE SOILS	
Map Unit	Soil
AV1	Arenosiltic gravelly loam, 8 to 15 percent slopes
AV2	Arenosiltic gravelly loam, 15 to 25 percent slopes
AV3	Arenosiltic gravelly loam, 25 to 40 percent slopes
AV4	Althol gravelly silt loam, 8 to 15 percent slopes
AV5	Althol gravelly silt loam, 15 to 25 percent slopes
BA1	Bekindon shaly silt loam, 8 to 15 percent slopes
BA2	Bekindon shaly silt loam, 15 to 25 percent slopes
BA3	Bekindon shaly silt loam, 25 to 40 percent slopes
BA4	Bekindon shaly silt loam, 40 to 60 percent slopes
BA5	Bekindon shaly silt loam, 60 to 75 percent slopes
BUC	Bucchanan very clayey silt loam, 8 to 15 percent slopes
BUC1	Bucchanan very clayey silt loam, 15 to 25 percent slopes
CAC1	Calcutin channery silt loam, 8 to 15 percent slopes
CAC2	Calcutin channery silt loam, 15 to 25 percent slopes
CM	Cherry very clayey silt loam, 8 to 25 percent slopes
CM1	Cherry very clayey silt loam, 25 to 40 percent slopes
CM2	Cherry very clayey silt loam, 40 to 60 percent slopes
CM3	Cherry very clayey silt loam, 60 to 75 percent slopes
CM4	Cherry very clayey silt loam, 75 to 85 percent slopes
CM5	Cherry very clayey silt loam, 85 to 95 percent slopes
CM6	Cherry very clayey silt loam, 95 to 100 percent slopes
CM7	Cherry very clayey silt loam, 100 to 110 percent slopes
CM8	Cherry very clayey silt loam, 110 to 120 percent slopes
CM9	Cherry very clayey silt loam, 120 to 130 percent slopes
CM10	Cherry very clayey silt loam, 130 to 140 percent slopes
CM11	Cherry very clayey silt loam, 140 to 150 percent slopes
CM12	Cherry very clayey silt loam, 150 to 160 percent slopes
CM13	Cherry very clayey silt loam, 160 to 170 percent slopes
CM14	Cherry very clayey silt loam, 170 to 180 percent slopes
CM15	Cherry very clayey silt loam, 180 to 190 percent slopes
CM16	Cherry very clayey silt loam, 190 to 200 percent slopes
CM17	Cherry very clayey silt loam, 200 to 210 percent slopes
CM18	Cherry very clayey silt loam, 210 to 220 percent slopes
CM19	Cherry very clayey silt loam, 220 to 230 percent slopes
CM20	Cherry very clayey silt loam, 230 to 240 percent slopes
CM21	Cherry very clayey silt loam, 240 to 250 percent slopes
CM22	Cherry very clayey silt loam, 250 to 260 percent slopes
CM23	Cherry very clayey silt loam, 260 to 270 percent slopes
CM24	Cherry very clayey silt loam, 270 to 280 percent slopes
CM25	Cherry very clayey silt loam, 280 to 290 percent slopes
CM26	Cherry very clayey silt loam, 290 to 300 percent slopes
CM27	Cherry very clayey silt loam, 300 to 310 percent slopes
CM28	Cherry very clayey silt loam, 310 to 320 percent slopes
CM29	Cherry very clayey silt loam, 320 to 330 percent slopes
CM30	Cherry very clayey silt loam, 330 to 340 percent slopes
CM31	Cherry very clayey silt loam, 340 to 350 percent slopes
CM32	Cherry very clayey silt loam, 350 to 360 percent slopes
CM33	Cherry very clayey silt loam, 360 to 370 percent slopes
CM34	Cherry very clayey silt loam, 370 to 380 percent slopes
CM35	Cherry very clayey silt loam, 380 to 390 percent slopes
CM36	Cherry very clayey silt loam, 390 to 400 percent slopes
CM37	Cherry very clayey silt loam, 400 to 410 percent slopes
CM38	Cherry very clayey silt loam, 410 to 420 percent slopes
CM39	Cherry very clayey silt loam, 420 to 430 percent slopes
CM40	Cherry very clayey silt loam, 430 to 440 percent slopes
CM41	Cherry very clayey silt loam, 440 to 450 percent slopes
CM42	Cherry very clayey silt loam, 450 to 460 percent slopes
CM43	Cherry very clayey silt loam, 460 to 470 percent slopes
CM44	Cherry very clayey silt loam, 470 to 480 percent slopes
CM45	Cherry very clayey silt loam, 480 to 490 percent slopes
CM46	Cherry very clayey silt loam, 490 to 500 percent slopes
CM47	Cherry very clayey silt loam, 500 to 510 percent slopes
CM48	Cherry very clayey silt loam, 510 to 520 percent slopes
CM49	Cherry very clayey silt loam, 520 to 530 percent slopes
CM50	Cherry very clayey silt loam, 530 to 540 percent slopes
CM51	Cherry very clayey silt loam, 540 to 550 percent slopes
CM52	Cherry very clayey silt loam, 550 to 560 percent slopes
CM53	Cherry very clayey silt loam, 560 to 570 percent slopes
CM54	Cherry very clayey silt loam, 570 to 580 percent slopes
CM55	Cherry very clayey silt loam, 580 to 590 percent slopes
CM56	Cherry very clayey silt loam, 590 to 600 percent slopes
CM57	Cherry very clayey silt loam, 600 to 610 percent slopes
CM58	Cherry very clayey silt loam, 610 to 620 percent slopes
CM59	Cherry very clayey silt loam, 620 to 630 percent slopes
CM60	Cherry very clayey silt loam, 630 to 640 percent slopes
CM61	Cherry very clayey silt loam, 640 to 650 percent slopes
CM62	Cherry very clayey silt loam, 650 to 660 percent slopes
CM63	Cherry very clayey silt loam, 660 to 670 percent slopes
CM64	Cherry very clayey silt loam, 670 to 680 percent slopes
CM65	Cherry very clayey silt loam, 680 to 690 percent slopes
CM66	Cherry very clayey silt loam, 690 to 700 percent slopes
CM67	Cherry very clayey silt loam, 700 to 710 percent slopes
CM68	Cherry very clayey silt loam, 710 to 720 percent slopes
CM69	Cherry very clayey silt loam, 720 to 730 percent slopes
CM70	Cherry very clayey silt loam, 730 to 740 percent slopes
CM71	Cherry very clayey silt loam, 740 to 750 percent slopes
CM72	Cherry very clayey silt loam, 750 to 760 percent slopes
CM73	Cherry very clayey silt loam, 760 to 770 percent slopes
CM74	Cherry very clayey silt loam, 770 to 780 percent slopes
CM75	Cherry very clayey silt loam, 780 to 790 percent slopes
CM76	Cherry very clayey silt loam, 790 to 800 percent slopes
CM77	Cherry very clayey silt loam, 800 to 810 percent slopes
CM78	Cherry very clayey silt loam, 810 to 820 percent slopes
CM79	Cherry very clayey silt loam, 820 to 830 percent slopes
CM80	Cherry very clayey silt loam, 830 to 840 percent slopes
CM81	Cherry very clayey

HYDRIC SOILS	
Cumberland County	
Map Unit	Soil
AnB	Andover gravelly loam 0 to 8 percent slopes
Aob	Andover very stony loam 0 to 8 percent slopes
Aw	Atkins silt loam 0 to 3 percent slopes
BA	Binkerton silt loam 0 to 3 percent slopes
BAc	Binkerton silt loam 3 to 8 percent slopes
Me	Melvin silt loam 0 to 3 percent slopes
York County	
Map Unit	Soil
Ba	Bate silt loam 0 to 3 percent slopes
Bo	Bowmansville silt loam 0 to 3 percent slopes
CrA	Croton silt loam 0 to 3 percent slopes
CRB	Croton silt loam 3 to 8 percent slopes
Ha	Hatboro silt loam 0 to 3 percent slopes
Waa	Watchung silt loam 0 to 3 percent slopes
Wbb	Watchung bouldery silt loam 0 to 8 percent slopes
Adams County	
No hydric soils mapped for portion of watershed within Adams County	